

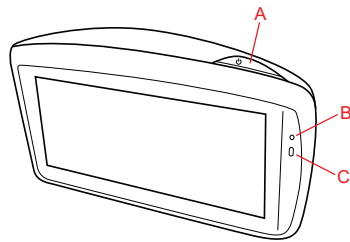
---

# TomTom GO

# 1. What's in the box

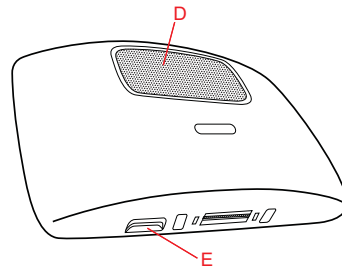
---

a TomTom GO

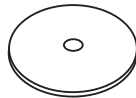


- A On/Off button
- B Microphone
- C Light sensor
- D Speaker
- E Memory card (micro SD card) slot

b Windshield Mount



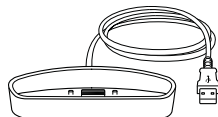
c Adhesive disk for Windshield Mount



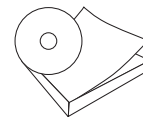
d USB car charger



e Home Dock



f Documentation pack



## 2. Before you start

---

### Switching on and off

Install your TomTom GO navigation device in your car following the instructions in the installation section at the start of this book.

To switch on your navigation device, press and hold the On/Off button until you see the start-up screen. The first time you switch on your device, it may take a short time to start.

To set up your device you need to answer a few questions by tapping the screen.

### Device not starting

In rare cases, your TomTom GO navigation device may not start correctly or may stop responding to your taps.

First, check that the battery is properly charged. To charge the battery, connect your device to the car charger. It can take up to 2 hours to fully charge the battery.

If this does not solve the problem, you can reset the device. To do this, press and hold the On/Off button for fifteen seconds and release the button when your device begins to restart.

### Battery notes

The battery in your TomTom GO navigation device charges when you connect it to the car charger or to your computer.

The light next to the On/Off button is orange while the battery is charging and is green when the battery is fully charged.

When you connect your device to a computer, you are asked if you want to connect to the computer. If you select **No** and then do not tap the screen within three minutes, the device will automatically switch off. This happens so that the battery can charge faster.

---

**Note:** You should plug the USB connector directly into a USB port on your computer and not into a USB hub or USB port on a keyboard or monitor.

---

### Windshield Mount

Use the Windshield Mount to install your TomTom GO inside your car.

Make sure that both the Windshield Mount and your windshield are clean and dry before you attach the mount. Place the Windshield Mount so that it does not interfere with your view of the road or of any of the controls in your car.

To attach the Windshield Mount, press the suction cup firmly against the windshield on an area where the glass is flat. Then twist the rubber grip near the base of the Windshield Mount in a clockwise direction until you hear a click.

## Home Dock

The home dock is used for charging your TomTom GO when it is not in the car and for connecting your GO to your computer.

When connected to your computer, you can use TomTom HOME to manage your GO.

## GPS reception

When you first start your TomTom GO navigation device, the device may need a few minutes to determine your GPS position and show your current position on the map. In future, your position will be found much faster, usually within a few seconds.

To ensure reception of a strong GPS signal, you should use your device outdoors. Large objects such as tall buildings can sometimes interfere with reception.

---

**Important:** Some vehicles have heat reflective shielding in the windshield which may prevent your navigation device from locating your position.

The TomTom External Antenna Kit (available for purchase as an accessory) can help to improve reception.

---

## Safety Notice

Your TomTom GO contains a GSM/GPRS module which can interfere with electrical devices such as cardiac pacemakers, hearing aids and aviation equipment.

Interference with these devices may endanger the health or life of others.

Do not use near unprotected electrical units nor in areas where the use of mobile telephones is prohibited, such as hospitals and airplanes.

## Take care of your device

Never leave your TomTom GO navigation device or accessories on view when you leave the car or they may become an easy target for thieves.

It is important to take care of your device.

- Your device is not designed for use in extreme temperatures and any such exposure may cause permanent damage.
- Do not open the casing of your device under any circumstances. Doing so may be dangerous and will invalidate the warranty.
- Wipe or dry the screen of your device using a soft cloth. Do not use any liquid cleaners.

## 3. Safety

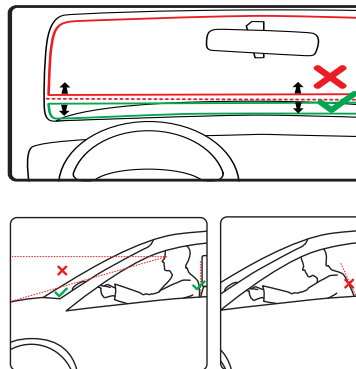
---

### Choosing where to attach the Windshield Mount

Consider carefully where you place the Windshield Mount in your car. The Windshield Mount should not block or interfere in any way with the following:

- Your view of the road
- Any of the controls in your car
- Any of your mirrors
- The airbag

You should be able to reach your GO easily when it is in the Windshield Mount without leaning or stretching. The diagrams show where you can safely attach the Windshield Mount.



You can attach the Windshield Mount to the windshield, side window or use a Dashboard Mount Disk to attach the Windshield Mount to your dashboard. TomTom also offers alternative mounting solutions for your TomTom device. For more information about Dashboard Mount Disks and alternative mounting solutions, go to [www.tomtom.com/accessories](http://www.tomtom.com/accessories).

### Installing the Windshield Mount

Make sure that both the Windshield Mount and your window are clean and dry.

1. Press the suction cup firmly against the window on an area where the glass is flat.
2. Twist the rubber grip near the base of the Windshield Mount in a clockwise direction until you hear a click.

The Windshield Mount is now installed.

## Safety preferences



We recommend using the safety preferences to make your driving as safe as possible. The safety preferences include, for example, the following options:

- Hide most menu options when driving
- Show safety reminders
- Warn when driving faster than allowed

You can also drive more safely by using voice commands to control your TomTom GO.

## 4. Making your first journey

---

Planning a route with your TomTom GO navigation device is easy. To plan a route, follow the steps below.

---

**Important:** For safety reasons, you should always plan a route before you start your journey.

---

1. Tap the screen to bring up the Main Menu.

---

**Note:** The buttons on your navigation device are shown in full color unless a button is currently unavailable. For example, the button named **Find alternative** in the Main Menu is not available until you have planned a route.

---

2. Tap **Navigate to...**



3. Tap **Address**.



When you enter an address, you can choose from the following options:

- **City center** - tap this button to set your destination as the center of a city or town.
- **Street and house number** - tap this button to set an exact address as your destination.
- **Zip code** - tap this button to enter a zip code as your destination.

---

**Note:** You can enter a zip code for any country. In the UK and the Netherlands, ZIP codes are detailed enough to identify a house on their own. In other countries you can enter a zip code to identify a town or area. You will then have to enter a street and house number.

---

- **Cross street or intersection** - tap this button to set your destination as the point where two streets meet.
- **Spoken address** - tap this button to set your destination by saying the address to your navigation device.

In this example, we will enter an exact address.

4. Tap **Street and house number**.




---

**Note:** When planning a trip for the first time your navigation device asks you to choose a state or country. Your choice is saved and used for all routes you plan.

You can change this setting at any time by tapping the flag.


---

5. Start to type the name of the town where you want to go.



As you type, the names of the towns that match what you have typed are shown. When your destination appears in the list, tap the name of the town to set the destination.

---

 **Tip:** Instead of typing the name, tap this button to say the address by speaking to your navigation device.

---

6. Start to type the street name and tap on the street when it appears in the list.

As with the name of the town, the names of the streets that match what you have typed are shown. When your destination appears in the list, tap the name of the street to set the destination.

7. Enter the house number and then tap **Done**.





8. Your navigation device asks if you need to arrive at a particular time. For this exercise, tap **NO**.

The route is calculated by your device using IQ Routes™.

IQ Routes is used to plan the best possible route taking into account the real average speeds measured on the roads.

9. When the route has been calculated, tap **Done**.

Your TomTom GO navigation device will warn you about any traffic delays and immediately begin to guide you to your destination, using both spoken instructions and on-screen directions.



## Arrival times

When you plan a route, your TomTom GO asks you if you need to arrive at a particular time.

Tap **YES** to enter a preferred arrival time.

Your GO calculates your arrival time and shows you whether you will arrive on time.

You can also use this information to work out when you need to leave. If your GO shows that you will arrive 30 minutes early, you can wait and leave in 30 minutes time, rather than arrive early.

Your arrival time is constantly recalculated during your trip. The status bar shows whether you will arrive on time or if you are going to be late, as shown below:



You will arrive 55 minutes before the arrival time you entered.

If the estimated arrival time is more than five minutes before the time you entered, it is shown in green.



You will arrive 3 minutes before the arrival time you entered.

If the estimated arrival time is less than 5 minutes before the time you entered, it is shown in yellow.



You will arrive 19 minutes late.

If the estimated arrival time is later than the time you entered, it is shown in red.



### Status bar preferences

Tap **Status bar preferences** in the Preferences menu, to enable or disable arrival time notifications.

Select the required options on the first menu screen and then tap **Done**.

To enable arrival time notifications, select **Show leeway to arrival time**.

## Other navigation options

When you tap **Navigate to...**, you can set your destination in many ways, not just by entering the address. The other options are listed below:



### Local search

Tap this button to use TomTom Local Search with Google search to help you find shops and businesses in and around your current location.

You can choose to search for stores and businesses near you, near your destination, near any other destination or in a city.

For example, if you are looking for a swimming pool near your current location, enter 'swimming pool' and choose the best search result.

---



### Home

Tap this button to navigate to your Home location.

You will probably use this button more than any other.

---



### Favorite

Tap this button to select a Favorite as your destination.

---



### Address

Tap this button to enter an address as your destination.

---



### Recent destination

Tap this button to select your destination from a list of places you have recently used as destinations.

---



### Point of Interest

Tap this button to navigate to a Point of Interest (POI).

---



### Point on map

Tap this button to select a point on the map as your destination using the map browser.

---



### Latitude Longitude

Tap this button to enter a destination using latitude and longitude values.

---



### TomTom Buddy

Tap this button to navigate to the last known position of a TomTom Buddy. Don't forget that the Buddy may move before you reach him.

---



Position of last stop

Tap this button to select your last recorded position, as your destination.

---

## Planning a route in advance

You can use your GO to plan a route in advance, selecting your starting point and your destination.

Here are some more reasons to plan a route in advance:

- Find out how long a trip is going to take before you start.

You can also compare trip times for the same route at different times of the day or on different days of the week. Your TomTom GO uses IQ Routes when planning a route. IQ Routes calculates routes based on the real average speeds measured on roads.

- Study the route of a trip you are planning.
- Check a route for someone who is coming to visit you and then explain the route to them in detail.

To plan a route in advance, follow these steps:

1. Tap the screen to bring up the main menu.
2. Tap the arrow button to move to the next menu screen and tap **Prepare route**.



Prepare route

3. Select the starting point for your trip in the same way that you would select your destination.
4. Set the destination for your trip.
5. Choose the type of route that should be planned.
  - **Fastest route** - the route which takes the least time.
  - **Shortest route** - the shortest distance between the locations you set. This may not be the quickest route, especially if the shortest route is through a town or city.
  - **Avoid freeways** - a route which avoids freeways.
  - **Walking route** - a route designed for making the trip on foot.
  - **Bicycle route** - a route designed for making the trip on a bicycle.
  - **Limited speed** - a route for a vehicle which can only be driven at a limited speed. You have to specify the maximum speed.
6. Choose when you will make the trip you are planning. There are three options:
  - **Now**
  - **Specific date and time** - you will be asked to enter the date and time.
  - **No specific date and time**

If you select either **Now** or **Specific date and time**, your GO uses IQ Routes to work out the best possible route at that time, using the real average speeds measured on roads. In this way you can compare how long a trip takes at different times of day, or on different days of the week.

7. Your TomTom GO plans the route between the two locations you selected.

## More information about a route

You can access these options for the route you last planned by tapping **View route** in the Main Menu or the **Details** button on the route summary screen.

You can then select from the following options:



**Browse as text**

Tap this button for a list of all the turn instructions on the route.

This is very useful if you need to explain a route to someone else.



**Browse as images**

Tap this button to see each turn in the trip. Tap the right and left arrows to move forwards and backwards through the trip.

Tap the screen to turn off the 3D display and view the map from above.



**Browse map of route**

Tap this button to see an overview of the route using the map browser.



**Show route demo**

Tap this button to watch a demo of the trip. You can interrupt the demo at any time by tapping the screen.



**Show route summary**

Tap this button to open the route summary screen.



**View route**

---

Tap this button to see your route.

## 5. Voice recognition

---

Instead of tapping the screen to control your TomTom GO, you can now give instructions to your GO using your voice.

For example, to increase the volume on your GO, you can say, "Increase volume."

---

**Important:** To use voice recognition, you must have a computer voice installed on your TomTom GO. If you don't have a computer voice installed, use TomTom HOME to install one.

---

To view the list of available commands, tap **Voice Control preferences** in the Preferences menu and then tap **What can I say?**

You can also look at the voice recognition reference card in your box.

### Using voice recognition

---

**Note:** You must select a computer voice in order to use voice recognition. To select a computer voice, tap **Change preferences** in the Main menu. Then tap **Voice preferences** and **Change voice**. Select a computer voice.

---

In this example, you will use voice recognition to plan a journey to your Home address.

1. Tap the voice recognition button in the Driving View.



---

**Note:** To add or remove this button from the Driving View, tap **Voice control preferences** in the Preferences menu and then tap **Enable voice control** or **Disable voice control**.

---

The voice recognition monitor is shown in color, unless voice recognition is busy with another task.

2. When you hear a beep, say, "Navigate to Home."

When you speak, the voice recognition monitor shows if you are talking too loudly or quietly:



A green bar means your voice is at the right level for your GO to hear your commands.



A red bar means your voice is too loud.



A grey bar means your voice is too quiet.

For some phrases, your GO will always repeat the command and then ask you if the command has been correctly recognized.

3. If the command is correct, say, "Yes."

If the command is incorrect, say, "No" and when prompted, say the command again after the beep .

Your GO plans a route from your current position to your Home address.

---

### Tips

- Voice recognition switches off after a few seconds if you don't say anything. For example, if your GO asks you to confirm the last command you gave and you don't say anything, voice recognition switches off after a few seconds.
  - You can stop your GO from listening for commands either by tapping the screen or by saying any of the following commands: Back, Cancel, Quit.
  - To select an item from a list, tap the screen to select the item. Voice recognition cannot be used to select items from a list.
- 

## Planning a trip using your voice

---

**Important:** You should always plan your journey before you start driving. It is dangerous to plan a route while driving.

---

To plan a route to an address using speech, do the following:

1. Tap the voice recognition button in the Driving View.
2. When you hear a beep, say, "Navigate to address."



When you speak, the voice recognition monitor shows if you are talking too loudly or quietly:



A green bar means your voice is at the right level for your GO to hear your commands.



A red bar means your voice is too loud.



A grey bar means your voice is too quiet.

For some phrases, your GO will always repeat the command and then ask you if the command has been correctly recognized.

You can now enter an address using speech.

Alternatively, you can tap the screen to start planning a trip, then tap **Spoken address (dialog)** or **Spoken address** to start entering an address by voice.

3. Say the city name.



When you say the city name, you are then shown a list of six names that match what you said.

Your GO tells you the name at the top of the list. If the name you hear is correct, then say, "Done" or "OK" or "Yes" or "One" or tap on the name.

If the city name you hear is not correct, but the name appears in the list, then say the number next to the correct name or tap on the correct name.

For example, if the correct name is Rotterdam and this name is number two in the list, you could say, "Two" or tap on the name, Rotterdam.

If the city name is not shown in the list, then say "Back" or "No" or tap the **Back** button to return to the previous screen. Then say the city name again.

---

**Note:** You need to say numbers in the same language that is used for menu buttons.

---

4. Say the street name.

Your GO states the name shown at the top of the list. If the name you hear is correct, then say, "Done" or "OK" or "Yes" or "One" or tap on the name.

---

**Note:** Different locations may have similar names, such as a road that has multiple zip code locations. In such cases, all of these locations are shown in the list and you need to look at the screen and select the correct location.

---

If the name you hear is incorrect but the correct name is shown in the list, then say the number next to the correct name or tap on the street name.

If the street name is not shown in the list, say "Back" or "No" or tap the **Back** button to return to the previous screen. Then say the street name again.

5. Say the house number.



Numbers should be pronounced normally. For example, you would say the number 357 as one continuous sentence, "Three hundred and fifty seven."

If the number is shown incorrectly, say, "Back" or "No" or tap the Backspace key. Then say the number again.

---

**Tip:** If you say, "Back" when there are no numbers shown on the screen, then your GO will return you to the previous screen.

---

When the number is shown correctly say, "Done" or "OK." Alternatively, enter the number by tapping the screen.

To select a crossroads as the location, say "Crossing".

---

**Note:** You need to say numbers in the same language that is used for menu buttons.

---

6. Your GO asks if you need to arrive at a particular time. For this exercise, tap **NO**.

The route is calculated by your GO.

7. When the route has been calculated, tap **Done**.

## Voice address input

---

**Important:** You should always plan your journey before you start driving. It is dangerous to plan a route while driving.

---

If you don't use voice recognition to start planning a journey, you can still enter an address using speech.

To start planning a trip, tap **Navigate to...** in the Main Menu, then tap **Address**.

To enter your destination using your voice, tap one of these buttons:



**Spoken address (dialog)**

Tap this button to enter an address using only speech. Using this option, your GO can recognize the following:

- Commands: **Yes, No, Back, Done, OK, Crossing**.
- Street names.
- Place names.
- Numbers: Numbers should be pronounced as individual numerals. For example, to say the number 35, say "Three" and then say "Five."

Using **Spoken address (dialog)**, you can enter information without tapping the screen.



**Spoken address**

Tap this button to enter an address using both speech and by tapping the screen. Using this option your GO can recognize the following:

- Street names.
- Place names.

Using **Spoken address** is typically faster than using **Spoken address (dialog)**.

---





You can use speech to enter destinations wherever you see this button.

You can use speech to enter these types of destination:

- **City center** - to say the center of a city or town, tap the speech button at the bottom of the keyboard.
- **Street and house number** - to say an address, tap the speech button at the bottom of the keyboard.
- **Crossing or intersection** - to say the point where two streets meet, tap the speech button at the bottom of the keyboard.

When this button is shown in gray, you cannot use speech to enter an address.

---

**Note:** *Zip code address entry is not possible using speech.*

---

Your GO recognizes place and street names spoken using the local language and pronunciation.

It is not possible to use voice address input to say place and street names in all countries.

## 6. Driving View

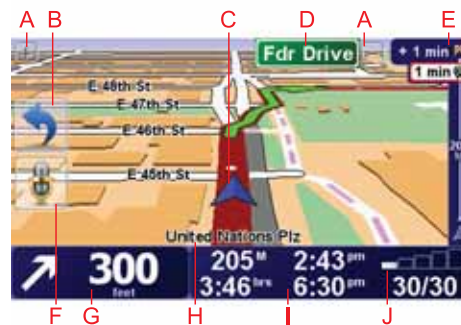
When your TomTom GO starts, you are shown the Driving View along with detailed information about your current location.

Tap the center of the screen at any time to open the Main Menu.

---

**Note:** The Driving View is shown in black and white until your GO locates your current position.

---



A Tap + and - to zoom in and out.

B Quick menu - switch this on in the Preferences menu.

C Your current position.

D The name of the next major road or road sign information, if applicable.

The name of the next major road, road sign information, if applicable, or the next street name, if enabled.

E Traffic sidebar.

F Voice recognition button.

G Navigation instruction for the road ahead.

Tap this area to repeat the last spoken instruction and to change the volume.

H The name of the street you are on.

I Information about your trip such as trip time, remaining distance and arrival time.

To change the information shown, tap **Status bar preferences** in the **Preferences** menu.

J GPS signal strength.

## 7. Advanced Lane Guidance

---

### Advanced Lane Guidance

Your TomTom GO helps you prepare for highway exits and intersections by showing you which lane you should be in.

---

*Note: This information is not available for all intersections or in all countries.*

---

For some exits and junctions, an image shows the turn and the lane you should take.



To turn the images off, tap **Hide lane images** in the Preferences menu.

For other exits and intersections, your GO shows the lane you should take in the Status bar. To turn this guidance off, tap **Change preferences** in the Main Menu, then tap **Status bar preferences**. Clear the checkbox for **Show lane guidance**.



## 8. Finding alternative routes

---

Once you have planned a route, you may want to change something about the route, without changing your destination.

### Why change the route?

Maybe for one of these reasons:

- You can see a roadblock or a line of traffic ahead.
- You want to travel via a particular location, to pick someone up, stop for lunch or fill up with gas.
- You want to avoid a difficult intersection or a road you don't like.



**Find alternative...**

Tap **Find alternative...** in the Main Menu to change the route that is currently planned.

The **Find alternative...** button is also shown in the route summary screen after you plan a route.



**Calculate alternative**

Tap this button to calculate an alternative to the route already planned.

Your GO will look for another route from your current location to your destination.

If you decide you would prefer to use the original route after all, tap **Recalculate original**.

#### **Why would I need to do this?**

Apart from the roads near your position and near your destination, the new route will use totally different roads to reach your destination. This is an easy way of calculating a totally different route.



**Avoid roadblock**

Tap this button if you can see a roadblock or a line of traffic ahead. You then have to choose how much of the route ahead you want to avoid.

Choose from the different options: 100m, 500m, 2000m, 5000m. Your GO will recalculate your route avoiding the section of the route for the distance you selected.

Don't forget that once a new route is calculated, you may have to turn off the road you are on very soon.

If the roadblock suddenly clears, tap **Recalculate original** to return to your original route.



**Travel via...**

Tap this button to change your route so that it passes a particular location, perhaps to pick someone up on the way. When you do this, a marker is shown on the map for the location you choose the travel over.

You choose the location you want to pass in the same way as you choose a destination. So you can select from all the same options: for example, **Address, Favorite, Point of Interest** and **Point on map**.

Your GO will calculate a new route to your destination that passes the location you chose. Unlike your final destination, your GO does not inform you when you pass by this location.

Using this button, you can only travel via one location. If you want to pass more than one, use an Itinerary.



**Recalculate original**

Tap this button to return to the original route without deviations to avoid roadblocks or traveling via particular locations.



**Avoid part of route**

Tap this button to avoid a part of the route. Use this button if you see that your route includes a road or junction you don't like, or which is well-known for traffic problems.

You then choose the road you want to avoid from a list of the roads on your route.



**Minimize delays**

Tap this button to recalculate your route so that it avoids traffic problems as much as possible. Your GO will check if there are any traffic problems on your route and work out the best route to avoid the problems.

---

**Note:** *This button is only available with TomTom Traffic enabled.*

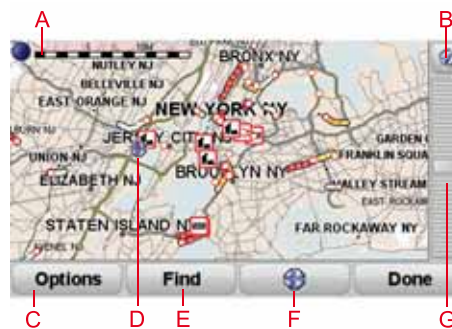
---

## 9. Browse map

---

To look at the map in the same way as you might look at a traditional paper map, tap **Browse map** in the Main Menu.

You can move the map by touching the screen and moving your finger across the screen.



A The scale bar

B GPS button

Tap this button to center the map on your current position.

C Options

D The cursor

E The Find button

Tap this button to find specific addresses.

F The Cursor button

Tap this button to navigate to the cursor position, make a Favorite of the cursor position, or find a Point of Interest near the cursor position.

G The zoom bar

Zoom in and out by moving the slider.

### Options

Tap the **Options** button to set the information shown on the map. You can choose to show the following information:

- **Points of interest.** Tap **POI** below the list of options to select which POIs are shown.
- **Favorites**
- **Traffic**

- Images
- Names
- Coordinates

## 10. TomTom Map Share™

---

With TomTom Map Share, you can correct errors on your map and share those corrections with other people in the TomTom Map Share community as well as receive corrections made by others.



If you find a street that has recently been blocked to traffic but was open before, you can use Map Share to correct your map and then share the correction with other Map Share members.

You can use Map Share to send and receive map corrections during the first year after the map's release date. This means that one year after the release date, you will no longer be able to send or receive map corrections for that version of the map - You will still be able to make corrections to your own map for use on your own device.

You choose the type of corrections you want and each time you connect your TomTom GO to TomTom HOME, the map will be updated automatically.

---

**Note:** TomTom Map Share is not available in all regions. For more information, go to [tomtom.com/mapshare](http://tomtom.com/mapshare)

---

### Map corrections

There are two types of map corrections:

- Corrections that are immediately shown on the map. These include, changing the traffic flow of a street, blocking or renaming a street and adding or editing POIs.

This type of change is immediately shown on your own map. You can hide these corrections at any time in the Map Share preferences menu.

- Corrections that are reported to TomTom but not shown immediately on your map. These include, missing streets, errors in freeway entrances and exits and missing rotaries.

This type of correction is investigated by TomTom and once verified, is included in the next map release. These corrections are therefore not shared with the Map Share community.



---

**Tip:** If you cannot see the **Map corrections** button in the Main Menu, tap **Show ALL menu options** in the Preferences menu.

---

## Making a map correction

---

**Important:** For safety reasons, you should only mark a location when you are driving. Do not enter the full details of an error while you are driving.

---



Correct a map error

1. Tap **Map corrections** in the Main Menu.
2. Tap **Correct a map error**.  
A list of possible map corrections is shown.
3. Select the type of correction you want to report.

---

**Note:** If you tap **Add missing POI** or **Report other error** you will be asked for some additional information before the next step.

---

4. Select the method you want to use for selecting the location of the correction.
5. When you have found the location, tap **Done**.
6. Enter correction or confirmation of correction now.

## Receiving the latest map updates

When you connect your TomTom GO to your computer, TomTom HOME automatically downloads any available map corrections and sends any changes you have made, to the Map Share community.

There are several types of corrections which can be set in the Correction preferences menu.

## Marking a map error while on the move

---

**Important:** For safety reasons, you should only mark a location when you are driving. Do not enter the full details of an error while you are driving.

---

If you notice an item on your map that needs attention, you can mark the location using the **Report** button and then enter the details when you are no longer driving.

To show the **Report** button in the Driving View or in the quick menu, do the following:

1. Tap **Map corrections** in the Main Menu.

---

**Tip:** If you cannot see the **Map corrections** button in the Main Menu, tap **Show ALL menu options** in the Preferences menu.

---

2. Tap **Correction preferences**.
3. Tap **Done** and then tap **Done** again.
4. Select **Show report button**, then tap **Done**.

The **Report** button is shown on the left-hand side of the Driving View. After you mark a location, you can add more information about the change when you open the **Map corrections** menu.

For example, you are driving to a friend's house and you notice that the name of the street you are on is different from the one on your map. To report the change, tap the **Report** button and your GO will save your current location. You can then send the correction to TomTom Map Share when you have finished your trip.

## TomTom Map Share community

To join the Map Share community, do the following:

1. Tap **Map corrections** in the Main Menu.

---

**Tip:** If you cannot see the **Map corrections** button in the Main Menu, tap **Show ALL menu options** in the Preferences menu.

---

2. Tap **Download corrections made by others**.
3. Tap **Join**.

When you connect your GO to your computer, TomTom HOME downloads new corrections and sends your corrections to the Map Share community.

---

**Important:** TomTom Map Share corrections are not sent to your navigation device using a wireless connection. You should regularly connect your device to your computer and use TomTom HOME to check for new updates.

---

## Correction preferences

The correction preferences set the way TomTom Map Share works on your device.

You can set the following preferences:

- Use the trust level slider to choose the types of corrections from the Map Share community you want to use on your maps.
- Decide if you want to share your corrections with others.
- Show or hide the report button in the Driving View.

To set your preferences, select **Map corrections** in the Main Menu.

---

**Tip:** If you later decide you want to remove corrections from the map, clear the checkbox next to the types of corrections you want to remove. If you clear all the checkboxes, your map returns to the original state before the first correction.

---

## Trust slider

Use the Trust level slider to set the type of map corrections you want added to your map. To do this, tap **Correction preferences** in the Map corrections menu.



There are four levels of trust that you can choose. The level changes when you move the slider:

- **TomTom** - only accept changes made by TomTom.
- **Trusted sources** - accept changes made by TomTom and by trusted users who have been verified by TomTom.
- **Many users** - accept changes made by TomTom, by trusted users who have been verified by TomTom and changes made by a high number of Map Share community members.
- **Some users** - accept changes made by TomTom, by trusted users who have been verified by TomTom and all changes that have been made by Map Share community members.

### Types of map correction

There are several types of correction that you can make to a map.

To make a correction to your map, tap **Map corrections** in the Main Menu then tap **Correct a map error**. The following types of corrections are shown.

---



Tap this button to block or unblock a street. You can block or unblock the street in one or both directions.

For example, to correct a street near to your current location, do the following:

1. Tap **(Un)block street**.
2. Tap **Near you** to select a street near your current location. You can select a street by name, a street near your Home location or a street on the map.
3. Select the street or section of a street you want to correct by tapping it on the map.

The street you select is highlighted and the cursor shows the name of the street.

4. Tap **Done**.

Your device shows the street and whether the traffic is blocked or allowed in each direction.



5. Tap one of the direction buttons to block or unblock the flow of traffic in that direction.
6. Tap **Done**.

The next time you connect your device to TomTom HOME, your corrections are shared with the TomTom Map Share community.

---



Tap this button to correct the traffic direction of a one-way street, where the direction of traffic is different to the direction shown on your map.

**Note:** Reverse traffic direction only works for one-way streets. If you select a two-way street you will be given the chance to block/unblock the street rather than changing the direction.

---



**Edit street name**

Tap this button to change the name of a street on your map.

For example, to rename a street near to your current location:

1. Tap **Edit street name**.
2. Tap **Near you**.
3. Select the street or section of a street you want to correct by tapping it on the map.

The street you select is highlighted and the cursor shows the name of the street.

4. Tap **Done**.
  5. Type the correct street name.
  6. Tap **Done**.
- 



**Change turn restrictions**

Tap this button to change and report incorrect road turn directions.

---



**Change road speed**

Tap this button to change and report road speed limit.

---



**Add missing POI**

Tap this button to add a new Point of Interest (POI).

For example to add a new restaurant near to your current location:

1. Tap **Add missing POI**.
2. Tap **Restaurant** in the list of POI categories.
3. Tap **Near you**.
4. Select the location of the missing restaurant.

You can select the location by entering the address or by selecting the location on the map. Select **Near you** or **Near home** to open the map at your current location or at your Home location.

5. Tap **Done**.
6. Type the name of the restaurant then tap **OK**.
7. If you know the telephone number of the restaurant you can type it, then tap **OK**.

If you don't know the number, just tap **OK** without typing a number.

---



### **Edit POI**

Tap this button to edit an existing POI.

You can use this button to make the following changes to a POI:

- Delete the POI.
- Rename the POI.
- Change the telephone number of the POI.
- Change the category that a POI belongs to.
- Move the POI on the map.



### **Report other error**

Tap this button to report other types of corrections.

These corrections are not immediately applied to your map. Your TomTom GO sends a special report to TomTom Map Share.

You can report missing streets, errors in motorway entrances and exits and missing roundabouts. If the correction you want to report is not covered by any of these report types, enter a general description then tap Other.

---

## 11. Sounds and voices

---

Your TomTom GO plays the following kinds of sounds:

- Spoken instructions
- Hands-free calls
- Warnings
- Music

### Changing the volume level

You can change the volume in three ways:

- Tap the bottom left hand area of the Driving View. The last spoken instruction is repeated and the volume level is shown.  
Move the volume slider to adjust the volume.
- In the Main Menu, tap **Change preferences**, then tap **Volume preferences**.  
Tap **Test** to check your changes.
- You can set your GO to change the volume automatically depending on how noisy it is in the car.

### Changing the volume automatically



Volume preferences

Your TomTom GO can change the volume automatically.

1. In the Main Menu, tap **Change preferences**.
2. Tap **Volume preferences**.
3. Select **Link volume to noise level**.
4. Tap **Done**.

## Selecting a voice



### Voice preferences

To change the voice being used by your TomTom GO, tap **Voice preferences** in the Preferences menu, then tap **Change voice**. Select a voice from the list.

Your TomTom GO has two different kinds of voices:

- Computer voices

These are generated by your GO. They provide spoken instructions while you are driving and can pronounce street names and announce messages, traffic reports, weather reports, tips and tutorials.

- Human voices

These are recorded by an actor.

---

**Note:** Human voices only provide spoken instructions.

---

## How do computer voices work?

Your TomTom GO makes use of text-to-speech technology to generate computer voices. A text-to-speech program converts written text, for example an instruction like "Turn right", into the sound of a human voice.

The text-to-speech program looks at the whole sentence to make sure that the sound you hear is as close to the real thing as possible. The program is also able to recognize and quite accurately pronounce foreign place and street names. For example, the English voice can read French street names.

---

**Note:** If you select a human voice, this will only be able to announce commands, but not street names. If you would like street names to be announced, you will need to select a computer voice.

---

## Using computer voices

Computer voices can do more than just give spoken instructions. They can also include more information in their instructions, such as the name of the street you should turn on to. Computer voices can also read other information aloud, including road numbers, traffic warnings and incoming messages.

To set the information that a computer voice reads aloud, do the following:

1. Tap **Change preferences** in the Main Menu.
2. Tap **Voice preferences**.
3. Tap **Speech preferences** then select the information that your selected computer voice should read aloud.

## Internal and external speakers

Your TomTom GO contains a high quality speaker. This is used to play all the sounds on your GO unless you select to play some sounds through external speakers.

The following types of sounds can be played through the speakers as listed below:

- Spoken instructions and warnings:
  - The speaker inside your GO



- An external Bluetooth® Hi-Fi headset or speakers
- Using an audio cable.
- Music
  - The speaker inside your GO
  - An external Bluetooth® Hi-Fi headset or speakers
  - Using an audio cable.
- Phone calls
  - The speaker inside your GO

---

**Note:** *If you wish to use an audio cable, a Windshield Mount with an audio connector is available as an accessory. Your car stereo needs a line-in connector. Not all car stereos have line-in connectors. Check the instructions for your car stereo for more information.*

---

## Using Bluetooth® Hi-Fi speakers

Your GO can play sound through Bluetooth® Hi-Fi speakers, such as a Bluetooth® Hi-Fi headset, or a car stereo which uses Bluetooth®.

To play sound over Bluetooth® Hi-Fi speakers, do the following:

1. Tap **Speaker preferences** in the Preferences menu.



Tap this button to change the speaker settings.

2. To play spoken instructions through a Bluetooth device, select **Bluetooth Hi-Fi device**.
3. To play music through a Bluetooth device, select **Bluetooth Hi-Fi device**.
4. Tap **Done**.
5. Your GO asks you to confirm that you want to use an external Bluetooth® Hi-Fi speaker. Tap **YES**.

Your GO will start searching for Bluetooth® Hi-Fi devices.

6. Select your Bluetooth® Hi-Fi device from the list of devices found by your GO.

Your GO will try to establish a Bluetooth® connection with your device.

Your device may require you to enter a password on your GO before a Bluetooth® connection can be established. See the documentation for your Bluetooth® Hi-Fi device for more information.

Once connected, sound will be played through the external Bluetooth® Hi-Fi device.

If your GO cannot establish a Bluetooth® connection, then all sound will be played through the internal speaker or through the audio cable if it is connected.

## 12. Preferences

---

You can change the way your TomTom GO looks and behaves.

Tap **Change preferences** in the Main Menu.

### Hidden buttons and features

When you first start using your TomTom GO, all the buttons are shown in the menu.

The buttons for the more advanced features can be hidden. This is a useful option because you are unlikely to use certain features very often.



**Show fewer menu options**

Tap this button in the Preferences menu, to reduce the number of buttons that are shown.

You might want to do this so that only frequently used buttons are shown.

When you need to use the buttons that are hidden, you can press **Show ALL menu options** in the Preferences menu to show all buttons.



**Show ALL menu options**

Tap this button in the Preferences menu, to show all the buttons available on your TomTom GO.

### Use night colors / Use day colors



**Use night colors**

Tap this button to reduce the brightness of the screen and show darker colors on the map.

#### **When should I use this?**

When it's dark, it is easier to see the screen if the display on your GO is not brightly lit.



**Use day colors**

To change back to a brighter screen showing brighter colors on the map, tap **Use day colors**.

#### **Can my GO make this change automatically?**

Yes. Your GO has a light sensor to tell when it is getting dark.

To change to night and day colors automatically, tap **Brightness preferences** in the Preferences menu. Then select **Switch to night view when dark**.

## Show POI on map



Show POI on map

Tap this button to set which categories for the Points of Interest (POIs) should be shown on the map:

1. Tap **Show POIs on map** in the Preferences menu.
2. Select the POI categories to display on the map.

Tap **Find** to search for a POI category.

3. Tap **Done**.

The POIs you have selected are shown as symbols on the map.

## Safety preferences



Safety preferences

Tap this button to set the following safety preferences:

- **Hide most menu options while driving**
- **Suggest driving breaks**
- **Show safety reminders**
- **Warn when near places of worship or schools**
- **Warn when driving faster than allowed**
- **Warn when driving faster than a set speed**
- **Warn not to leave the device in the car**

If you select one or more of the warnings, you will also be asked to select a sound to be played whenever a warning is displayed.

Select whether or not your TomTom GO should warn you about which side of the road you should be driving on.

Decide if you want the map display to be turned off in special circumstances and press **Done**.

### What happens when I use the Turn off map display option?

When you turn off the map display, instead of seeing your position on a map in the Driving View, you will only see information about the next instruction.

Tap the button and select an option for when the map should be turned off. These are the options:

- **Always** - The map will not be shown and you will only see information about the next instruction and arrows showing direction.
- **Above a certain speed** - you set the speed at which point the map will be turned off. This option is useful for situations when the map might be distracting, such as when you are driving fast.
- **Never** - the map is never turned off.

## Voice preferences



Tap **Voice preferences** to manage your TomTom voices. The following options are available:

- **Change voice** - tap this button to change the voice that gives you instructions.  
  
A wide range of recorded human voices and computer voices are available.
- **Disable voice** - tap this button to disable the use of voices. To enable voices, tap **Enable**.
- **Speech preferences** - tap this button to set the situations when your TomTom will read instructions or warnings aloud.
- **Record voice** - tap this button to record your own voice for use by your TomTom. The procedure takes about fifteen minutes, during which time you will say all the commands that are used by your TomTom GO.

In the Preferences menu, tap **Voice preferences**, then tap **Record voice** and follow the instructions for recording your voice.

- **Disable recorded voice**
- **Enable recorded voice**
- **Download voice** - tap this button to download new voices from TomTom Services and transfer them to your TomTom.

## Turn off sound / Turn on sound



Tap this button to turn off sound. If you turn off the sound, warnings for upcoming POIs are also turned off.

The button changes to **Turn on sound**.

---

### Tips

To change the volume, tap **Volume preferences** in the Preferences menu.

To change the volume quickly while you are driving, tap the bottom left-hand section of the Driving View and move the slider.

To change the voice being used by your GO, tap **Change voice** in the Voice preferences menu.

You can still listen to music even if you have turned off voice instructions.

---

### Can I still use my GO to make hands-free calls when the sound is turned off?

Yes. Turning the sound off does not affect hands-free calling, meaning that you will still be able to talk to and hear the caller.

## Volume preferences



**Volume preferences**

Tap this button to change the volume.

This setting does not change the volume of the radio, CDs, or music played from an iPod® or USB storage device.

### **Can my GO change the volume depending on how noisy it is in the car?**

Select **Link volume to noise level** and your GO will change the volume according to the background noise. The noise level is constantly monitored by the microphone on your GO. If there is a lot of noise in the car, your GO will automatically increase the volume.

For example, if you are driving on the highway, which is often very noisy, the volume level on your GO will be increased. When you are driving more slowly again, the volume level will be lowered by your GO.

## Manage Favorites



**Manage Favorites**

Tap this button to rename or delete Favorites.

To find a Favorite quickly, tap **Find**, then start to type the name of the Favorite. As soon as the Favorite is shown in the list, you can select it.

## Change Home location



**Change Home location**

Tap this button to set or change your Home location.

### **Do I need to use my actual home address for the Home location?**

No. Your Home location can be a place you go often, for example, your office. It can be your actual home address, but it can also be any address you like.

### **Why should I set a Home location?**

Having a Home location means that you have a quick and easy way to navigate there, by tapping the Home button in the **Navigate to...** menu

## Manage maps

---

This button may only be available if all menu options are shown. To show all menu options, tap **Show ALL menu options** in the Preferences menu.

---



### Manage maps

Tap this button to do the following:

- **Switch map** - tap this button to change the map you are using.
- **Download free map corrections** - tap this button to download map corrections provided as part of the Map Share service.

Use TomTom HOME to make backups, download, add and delete maps from your navigation device.

## Manage POIs

---

This button may only be available if all menu options are shown. To show all menu options, tap **Show ALL menu options** in the Preferences menu.

---



### Manage POIs

Tap this button to do the following:

- Set alerts for when you are near POIs.  
For example, your GO can tell you when there is a gas station nearby.
- Create your own POI categories and add POIs to them.

For example, you could create a category of POIs called "Friends", and add all your friends' addresses as POIs in the category. You can even add your friends' phone numbers with their address so you can call them from your GO.

The following buttons are available:

- **Add POI** - tap this button to add a location to a POI category you have created.
- **Warn when near POI** - tap this button to be warned when you approach a POI. You can select the types of POI for which you wish to be warned.
- **Delete POI** - tap this button to delete a POI you created.
- **Edit POI** - tap this button to edit the details of a POI you created.
- **Add POI category** - tap this button to create a new POI category.
- **Delete POI category** - tap this button to delete a POI category you created.

## Change car symbol

---

This button may only be available if all menu options are shown. To show all menu options, tap **Show ALL menu options** in the Preferences menu.

---



Change car symbol

Tap this button to select a car symbol that will be used to show your current position in the Driving view.

Additional car symbols can be downloaded using TomTom HOME.

## Change 2D/3D display / Turn on 2D display



Turn on 2D display

Tap **Turn on 2D display** to change the perspective for viewing the map.

For example, the 2D view shows a two dimensional view of the map as though viewed from above.



Change 2D/3D display

To switch the view to a three dimensional perspective, tap **Change 2D/3D display** and select a view from the list.

### When should I use this?

In some situations, it is easier to see the map from above. Perhaps if the road network is complicated or for times when you are walking while using your GO to navigate.

## Show/Hide lane images

---

This button may only be available if all menu options are shown. To show all menu options, tap **Show ALL menu options** in the Preferences menu.

---



Show lane images

Tap this button to show or hide the arrows that warn you which lane you need to be in to navigate an approaching road exit or intersection.

## Change map colors

---

This button may only be available if all menu options are shown. To show all menu options, tap **Show ALL menu options** in the Preferences menu.

---



Change map colors

Tap this button to select the color schemes for day and night map colors.

You can also download more color schemes from TomTom Services.

## Brightness preferences

---

This button may only be available if all menu options are shown. To show all menu options, tap **Show ALL menu options** in the Preferences menu.

---



**Brightness preferences**

Tap this button to set the brightness of the screen.

Move the sliders to set the brightness separately for day map colors and for night map colors.

You can also set these options:

- **Turn brightness down when dark** - your GO uses a light sensor to detect the background light level. If this option is selected, as it gets darker, your GO reduces the brightness of the screen so that it is not distracting.
- **Switch to night view when dark** - your GO uses a light sensor to detect the background light level. If this option is selected, when it gets dark, your GO uses night colors for the Driving View.

You can set the map color scheme by tapping **Change map colors**.



## Status bar preferences

---

This button may only be available if all menu options are shown. To show all menu options, tap **Show ALL menu options** in the Preferences menu.

---



Status bar preferences

Tap this button to select the information shown on the status bar:

- **How should the status bar be displayed?**

**Horizontal** - If you choose this option, the status bar will be shown at the bottom of the Driving view.

**Vertical** - If you choose this option, the status bar will be shown at the right-hand side of the Driving view.

- **Remaining time** - the estimated time left until you reach your destination.
- **Remaining distance** - the distance left until you reach your destination.
- **Current time**
- **Arrival time** - your estimated arrival time.
- **Speed**
- **Direction**
- **Show lane guidance**
- **Show current street name**
- **Show leeway to arrival time** - your GO shows how late or early you will be compared with the preferred arrival time that is set during the planning of a route.
- **Show max speed next to speed** - only available when speed (above) is also selected.

---

***Note:** If the speed limit for the road you are on is available, it is shown next to your speed.*

*If you drive faster than the speed limit, your speed is shown in red.*

---

- **Show compass**

## Automatic zooming

---

This button may only be available if all menu options are shown. To show all menu options, tap **Show ALL menu options** in the Preferences menu.

---



Automatic zooming

Tap this button to enable or disable automatic zooming in the Driving View.

## Quick menu preferences

---

This button may only be available if all menu options are shown. To show all menu options, tap **Show ALL menu options** in the Preferences menu.

---



Quick menu preferences

Tap this button to choose up to six buttons to be used in the Quick menu.

The Quick menu button enables easy access for your most commonly used buttons.

The buttons you assign for use with the Quick menu, are shown in the Driving View.

## Voice Control preferences



Voice Control preferences

Tap **Voice Control preferences** to enable or disable Voice recognition and to see which spoken commands your TomTom GO understands.

---

**Important:** To use voice recognition, a computer voice must be installed on your GO. You can use TomTom HOME to install computer voices if they are not already installed.

---

- **Disable Voice Control** - Tap this button to enable or disable voice recognition.
- **What can I say?** - Tap this button to view the list of spoken commands which are understood by your GO.

## Guided tours

---

This button may only be available if all menu options are shown. To show all menu options, tap **Show ALL menu options** in the Preferences menu.

---



Guided tours

Tap this button to show one of the Guided tours on how to use your TomTom GO.

## Street name preferences

---

This button may only be available if all menu options are shown. To show all menu options, tap **Show ALL menu options** in the Preferences menu.

---



Tap this button to set the information that is shown on the map in the Driving View. The following options are available:

- **Show house number before street name**
- **Show street names** - if you are using a computer voice for spoken instructions and have selected that street names should be read aloud, you do not need to select this option, since the street names will be read aloud even though this option is not selected.
- **Show next street name**
- **Show current street name on map**
- **Show next freeway / signpost** - if available, the road sign to follow or the name of the next major road on your route is shown at the top of the screen in the Driving View.

## Set units

---

This button may only be available if all menu options are shown. To show all menu options, tap **Show ALL menu options** in the Preferences menu.

---



Tap this button to set the type of units that will be shown for the following:

- Distance
- Time
- Latitude and longitude
- Temperature
- Air pressure

## Operate left-handed / Operate right-handed

---

This button may only be available if all menu options are shown. To show all menu options, tap **Show ALL menu options** in the Preferences menu.

---



Tap this button to move important buttons, for example, the **Done** and **Cancel** buttons as well as the zoom bar, to the left hand side of the screen. This makes it easier to tap the buttons with your left hand without blocking the screen.

To move the buttons back to the right hand side of the screen, tap **Operate right-handed**.

## Keyboard preferences



### Keyboard preferences

You use the keyboard to enter your destination or to find an item in a list, such as a POI.

Tap this button to select the size of the keys on the keyboard and the keyboard layout. You can select from two sizes:

- **Large keyboard**
- **Small keyboard**

Three keyboard layouts are available:

- **ABCD keyboard**
- **QWERTY keyboard**
- **AZERTY keyboard**

## Planning preferences



### Planning preferences

---

This button may only be available if all menu options are shown. To show all menu options, tap **Show ALL menu options** in the Preferences menu.

---

Tap this button to set the kind of route planned when you select a destination.

The following options are available:

- **Ask me every time I plan**
- **Always plan fastest routes**
- **Always plan shortest routes**
- **Always avoid freeways**
- **Always plan walking routes**
- **Always plan bicycle routes**
- **Always plan for limited speed**

Tap the **IQ Routes** button to enable or disable IQ Routes.

IQ Routes is used to plan the best possible route - taking into account the real average speeds measured on the roads.

Then set how your GO should handle the following when planning a route:

- Toll roads on the route
- Ferry crossings on the route
- HOV lanes on the route
- Unpaved roads

You can then set if the route summary screen closes automatically after you have planned a route. If you select **No**, you have to tap **Done** to close the route summary screen.

### Replanning preferences

Select whether or not you want your TomTom GO to replan your route when a faster route is found while you drive. This might occur due to changes in the traffic situation.

## Set owner

---

This button may only be available if all menu options are shown. To show all menu options, tap **Show ALL menu options** in the Preferences menu.

---



Set owner

Tap this button to enter your name and address as the owner of your GO and to change or delete a 4-digit password for your GO.

---

**Note:** *You can only change or delete a 4-digit password on your TomTom GO.*

---

You can create a 4-digit password for your GO using TomTom HOME:

1. Connect your GO to your computer and turn on your GO and your computer.

TomTom HOME starts automatically.

2. Click on **Operate my GO** in TomTom HOME.

Your GO appears and can be controlled using TomTom HOME.

3. From the Main Menu, click **Change preferences**.

4. Click **Set Owner**. You can now set a 4-digit password for your GO.

You can only create a 4-digit password using TomTom HOME.

## Speaker preferences

---

This button may only be available if all menu options are shown. To show all menu options, tap **Show ALL menu options** in the Preferences menu.

---



Speaker preferences

Tap this button to select which speakers are used by your TomTom GO for spoken instructions and also music. The following options are available:

- **Internal speaker**
- **Bluetooth Hi-Fi device**
- **Line-out (audio cable)**

## Music preferences

---

This button may only be available if all menu options are shown. To show all menu options, tap **Show ALL menu options** in the Preferences menu.

---



Tap this button to change the way your GO behaves when playing music.

- **Shuffle songs**
- **Repeat songs**
- **Reduce brightness**
- **Show music button in Driving View**
- **Automatically switch to Driving View**
- **Slideshow**

## Start-up preferences

---

This button may only be available if all menu options are shown. To show all menu options, tap **Show ALL menu options** in the Preferences menu.

---



Tap this button to select what happens when your GO starts. The following options are available:

- **Continue where I left off** - your GO starts and shows the last screen that was shown when you turned off the device.
- **Show the Driving View** - your GO starts and shows the Driving View.
- **Ask for a destination** - your GO starts with **Navigate to...** menu. You can enter a destination immediately.
- **Show the Main Menu** - your GO starts with the Main Menu.
- **Start TomTom Jukebox** - your GO starts by opening the TomTom Jukebox.
- **Start Slideshow** - your GO starts by showing a slideshow of the images stored there. To interrupt the slideshow, tap the screen.

You are then asked if you want to change the picture that is shown whenever you start your GO.

Tap **No** to finish or tap **Yes** to see the photos stored on your GO and tap on a photo to select that photo for use as your start-up picture.

## Bluetooth preferences

---

This button may only be available if all menu options are shown. To show all menu options, tap **Show ALL menu options** in the Preferences menu.

---



Bluetooth preferences

Tap this button to manage Bluetooth functionality on your TomTom GO.

---

**Important:** In places such as hospitals and on airplanes, you are required to switch off Bluetooth for all your electronic devices.

---

You can select the following options:

- **Disable Bluetooth/Enable Bluetooth** - switch Bluetooth on or off for your GO. If you disable Bluetooth, all the other options are unavailable.
- **Connect to Bluetooth device** - connect to another device that uses Bluetooth.
- **Disable hands-free calling/Enable hands-free calling** - switch hands-free calling on or off for your GO.
- **Disable wireless data/Enable wireless data** - enable or disable the transfer of wireless data.

## Flight mode



Flight Mode

Tap this button to enable or disable all wireless connections on your navigation device, such as Bluetooth and GSM mobile communications.

This is important when entering areas, such as a hospital, where you must turn off devices that transmit radio signals.

## Send/Receive files



Send/Receive files

---

This button may only be available if all menu options are shown. To show all menu options, tap **Show ALL menu options** in the Preferences menu.

---

Tap this button to send or receive files, such as itineraries and voices, using your GO with other Bluetooth devices.

## My TomTom account



MyTomTom account

---

This button may only be available if all menu options are shown. To show all menu options, tap **Show ALL menu options** in the Preferences menu.

---

Tap this button to log in to your TomTom account.

If you have more than one TomTom account or if several people are sharing the same TomTom GO, you can switch to another TomTom account.

## Battery saving preferences

---

This button may only be available if all menu options are shown. To show all menu options, tap **Show ALL menu options** in the Preferences menu.

---



Tap this button to configure your GO to conserve power when possible. The following options are available:

- **Never turn off screen**
- **Turn off screen between instructions**
- **Always turn off screen**

Then select whether or not you want to **Switch off when external power is lost**.

## Change language



Tap this button to change the language used for all the buttons and messages you see on your GO.

You can choose from a wide range of languages. When you change the language, you are also given the opportunity to change the voice.

## Set clock



Tap this button to select the type of clock that is shown and set the time.

The easiest way to set the time is by tapping the **Sync** button. Your GO will then take the time from GPS information.

---

***Note:** After using **Sync** to set the time, you may have to adjust the hours depending on your time zone. Your GO works out your time zone and always keeps the time correct using GPS information.*

*You can only use **Sync** if you have GPS reception, so you cannot set the clock in this way when you are indoors.*

---

## Hide tips / Show tips

---

This button may only be available if all menu options are shown. To show all menu options, tap **Show ALL menu options** in the Preferences menu.

---



Tap this button to stop your GO from showing tips.

To turn tips on again, tap **Show tips**.



## Reset factory settings

---

This button may only be available if all menu options are shown. To show all menu options, tap **Show ALL menu options** in the Preferences menu.

---



Tap this button to restore the factory settings to your TomTom GO.

All your settings, including Favorites, your Home location, warnings for POIs and any Itineraries you have created are deleted.

## 13. Points of Interest

---

Points of Interest or POIs are useful places on the map. Here are some examples:

- Restaurants
- Hotels
- Museums
- Parking garages
- Gas stations

---

**Note:** You can report missing POIs or edit existing POIs using Map Share and share your corrections with the Map Share community.

---

### Creating POIs

1. Tap the screen to bring up the main menu.
2. Tap **Change preferences**.
3. Tap **Manage POIs**.

---

This button may only be available if all menu options are shown. To show all menu options, tap **Show ALL menu options** in the Preferences menu.

---

4. Before you can add a POI, you have to create at least one POI category. Every POI is assigned to a POI category. You can only add POIs to POI categories you have created yourself.



Add POI category

Tap **Add POI category**.

5. Enter a name for your POI category, for example, 'Friends' or 'Favorite restaurants'. Then select a marker for your POI category.
6. Tap **Add POI**.



Add POI

Tap this button to add a POI.

7. You are asked to name the POI.

8. Select the POI category in which you want to add the POI.

9. Select the location of your POI from the list below.



Local search

Tap this button to use TomTom Local Search with Google search to help you find shops and businesses in and around your current location.

You can choose to search for shops and businesses near you, near your destination, near any other destination or in a city.

For example, if you are looking for a swimming pool near your current location, enter 'swimming pool' and choose the best search result.

---



Home

You can set your Home location as a POI.

If you want to change your Home location, you can create a POI of the Home location before you change it.

---



Favorite

You can create a POI from a Favorite.

You can only create a limited number of Favorites. If you want to create more Favorites you have to delete some Favorites first. Before you delete a Favorite, make it into a POI so that you don't lose the address.

---



Address

You can specify an address to be a POI. When you enter an address, you can choose from four options.

- **City center**
  - **Street and house number**
  - **Zip code**
  - **Crossing or intersection**
- 



Recent destination

Select a POI location from a list of places you have recently used as destinations.

---



Point of Interest

You can add a Point of Interest (POI) as a POI. For example, if you are creating a category of POIs for your favorite restaurants, use this option instead of entering the addresses of the restaurants.

---



My location

Tap this button to add your current position as a POI.

For example, if you stop somewhere you like, while you are there you can tap this button to create the POI.

---



Point on map

Tap this button to create a POI using the map browser.

Select the location of the POI using the cursor, then tap **Done**.

---



Latitude Longitude

Tap this button to create a POI by entering latitude and longitude values.

---



Tap this button to make a POI of the current position of a TomTom Buddy.



Tap this button to select your last recorded position as your destination.

This may be useful if your GO is unable to maintain a strong GPS signal, for example, when you drive through a long tunnel.

---

*Note: You can report missing POIs or edit existing POIs using Map Share and share your corrections with the Map Share community.*

---

## Navigating to a POI

You can use a POI as your destination. For example, if you are traveling to an unfamiliar city, you could choose a POI to help find a parking garage.

1. Tap the screen to bring up the main menu.
2. Tap **Navigate to...** in the Main Menu.
3. Tap **Point of Interest**.
4. Tap **POI in city**.
5. Narrow your choice of POIs by selecting the area where the POI is located.

You can select one of these options:

- **POI near you** - to choose from a list of POIs near to your current location.
- **POI in city** - to find a POI in a particular town or city.
- **POI near Home** - to choose from a list of POIs near to your Home location.

You can select from a list of POIs which are along your route or close to your destination. Choose from one of these options:

- **POI along route**
- **POI near destination**

---

*Note: The last POI you viewed is also shown so that you can plan a route there more quickly.*

---

6. Type the name of the town you want to visit and select the town when it appears in the list.

7. Select the category of POI:

Tap **Any POI category** to search for a POI by category name.

Tap the category of POI, if it is shown.

Tap the arrow to choose from the complete list of categories. Select the category from the list or start to type the name of the category and select it when it appears in the list.

8. Tap **Parking garage**.
9. From the list of POIs shown, select the POI you want to navigate to.

The table below explains the distances listed next to each POI.

POI near you	Distance from your current location
POI in city	Distance from the city center
POI near Home	Distance from your Home location
POI along route	Distance from your current location
POI near destination	Distance from your destination

If you know the name of the POI, tap **Find** and type the name. Select it from the list when it is shown.

The next screen shows more detailed information including the location of the POI on the map and the phone number of the POI, if available.

Tap **Select** to confirm you want to plan a route to this POI.

Once you have selected a POI, the route to the POI is calculated by your TomTom GO.

---

***Note:** You can also use Google Local Search to find shops and businesses wherever you are. For more information, see the chapter on LIVE Services.*

---

## Showing POIs on the map

1. Tap **Show POIs on map** in the Preferences menu.



Show POI on map

2. Select the POI categories to display on the map.  
Tap **Find** to search for a POI by name.
3. Tap **Done**.

The POIs you have selected are shown as symbols on the map.

## Calling a POI

Your TomTom GO knows the phone numbers for many POIs. You can, for example, call a restaurant to book a table.

1. In the Main Menu, tap **Mobile phone**.
2. Tap **Call...**
3. Tap **Point of interest**.
4. Select the POI you want to call.

You are shown the location on the map and telephone number.

5. Tap **Dial**.

Your TomTom GO dials the phone number using your mobile phone.

## How can I set warnings for POIs?

1. Tap the screen to bring up the main menu.
2. Tap **Change preferences**.
3. Tap **Manage POIs**.

---

**Note:** The **Manage POIs** button is only available when all menu buttons are shown. To show all menu buttons, tap **Show ALL menu options** in the Preferences menu.

---

4. Tap **Warn when near POI**.



Warn when near POI

Tap this button to receive a warning when you travel near to the location of a POI.

5. Select the category of POI you want to be warned about.

Select the category from the list or start to type the name of the category and select it when it is shown in the list.

6. Set how close the POI should be when you receive a warning.
7. Choose the warning sound for the category of POI you selected.

## Managing POIs



Manage POIs

Tap **Manage POIs** from the Preferences menu.

---

**Note:** The **Manage POIs** button is only available when all menu buttons are shown. To show all menu buttons, tap **Show ALL menu options** in the Preferences menu.

---

You can, for example, do the following:

- Create your own POI categories and add POIs to them.
- Set warnings when you get close to POIs.

### Why would I want to create my own POIs?

A POI acts like a shortcut - once you have saved a location as a POI you never have to type the address of that POI again. But when you create a POI you can save more than just the location.

- Phone number - when you create a POI, you can save a phone number with it.
- Categories - when you create a POI you have to put it in a category.

For example, you could create a category of POIs called 'Favorite restaurants'. With each POI, save the phone number so that you can call them from your GO to reserve a table.

For example, you could create a category of POIs called 'Favorite restaurants'. With each POI, save their phone number so that you can call them to reserve a table.

---

**Note:** *You can report missing POIs or edit existing POIs using Map Share and share your corrections with the Map Share community.*

---

## 14. Itinerary Planning

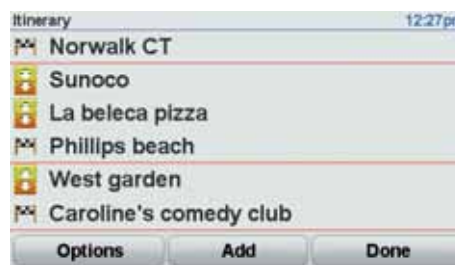
---

### What is an Itinerary?

An Itinerary is a plan for a trip including more locations than your final destination.

An Itinerary can include the following items:

- Destination - a location on your trip where you want to stop.
- Waypoint - a location on your trip you want to travel through without stopping.



Destinations are shown using this symbol.



Waypoints are shown using this symbol.

### When would I use an Itinerary?

You could use an Itinerary for trips such as:

- A road trip through a country with lots of stops.
- A two day car trip with an overnight stop.
- A short drive which passes by Points of Interest.

In all these examples you could tap **Navigate to...** for each place. However, if you use an Itinerary, you can save time by planning everything in advance.

### Creating an Itinerary

1. Tap the screen to bring up the main menu.
2. Tap **Itinerary planning**.





## Itinerary planning

The Itinerary planning screen opens. At first, there are no items on the Itinerary.

---

**Note:** This button may only be available if all menu options are shown. To show all menu options, tap **Show ALL menu options** in the Preferences menu.

---

3. Tap **Add** and select a location.

---

**Tip:** You can add items to your Itinerary in any order and rearrange the order later.

---

## Following an Itinerary

When you use an Itinerary to navigate, the route will be calculated to the first destination on the Itinerary. Your TomTom GO calculates the remaining distance and time to the first destination and not for the whole Itinerary.

As soon as you start to use an Itinerary, the route is calculated from your current position. You do not need to set a departure point.

When you have passed a waypoint or reached a destination, it is marked as visited.

Waypoints are shown on the map. Your GO will not warn you when you are approaching a waypoint or when you arrive at a waypoint.

## Organizing an Itinerary

Tap an item on your Itinerary to open a page of buttons for editing the item. The buttons shown below are available.



Mark as  
waypoint

You can change a waypoint into a destination using this button.

Remember that waypoints are points on your trip to your destination that you want to pass and destinations are places where you want to stop.

This button is only shown if the item you tapped is a destination.



Mark as  
destination

You can change a waypoint into a destination using this button.

Remember that destinations are places where you want to stop, and waypoints are points on your trip to your destination that you want to pass.

This button is only shown if the item you tapped is a waypoint.



Mark 'visited'

Tap this button to miss out part of your Itinerary. Your GO will ignore this item and all the items before it in the Itinerary.

It will navigate you to the next item in the Itinerary.

This button is only shown if you are still due to visit this item.



Mark 'to visit'

Tap this button to repeat part of your Itinerary. Your GO will navigate you to this item followed by the rest of the items in the Itinerary.

This button is only shown if you have already visited this item.



**Move item up**

Tap this button to move the item up the Itinerary.

This button is unavailable if the item is at the top of the Itinerary.

---



**Move item down**

Tap this button to move the item down the Itinerary.

This button is unavailable if the item is at the bottom of the Itinerary.

---



**Show on map**

Tap this button to see the location of the item on the map.

---



**Delete item**

Tap this button to delete the item from the Itinerary.

---

## Start Using an Itinerary

Tap **Options**, then tap **Start navigation**.

To save an Itinerary, tap **Save Itinerary**.

To load a saved Itinerary, tap **Load Itinerary**.

To create a new Itinerary, tap **New Itinerary** and to delete one, tap **Delete Itinerary**.

## 15. Help me

---

**Help me** provides an easy way to navigate to emergency services centers and other specialist services and contact them by phone.

For example, if you are involved in a car accident, you could use **Help me** to call the nearest hospital and tell them your exact location.

---

**Tip:** If you do not see the **Help me** button in the Main Menu, tap **Show ALL menu options** in the Preferences menu.

---

### How do I use Help me to phone a local service?

You can use **Help me** to search for a service center, make contact by phone and inform the center about the precise details of your current location.

When you search for a service center, you are shown a list of nearby locations. Select one of the centers in the list to view their address and phone number and your current location on the map.

If your phone is connected to your GO, your GO automatically dials the phone number.

To use **Help me** to locate a service center, contact the center by phone and navigate from your current location to the center, do the following:

1. Tap the screen to bring up the main menu.
2. Tap **Help me**.
3. Tap **Phone for help**.
4. Select the type of service you require, for example, Nearest hospital.
5. To dial, select a center from the list, the nearest is shown at the top of the list.

Once the call is answered your GO shows your position on the map along with a description of the location. This helps you explain where you are while making a call.

6. To navigate your way to the center on foot, tap **Walk there**.

Your GO starts guiding you to your destination.

### Options

---

**Note:** *In some countries, information may not be available for all services.*

---



**Phone for help**

Tap this button to find the contact details and location of a service center.



**Drive to help**

Tap this button to navigate your way by car to a service center.



**Walk to help**

Tap this button to navigate your way on foot to a service center.



**Where am I?**

Tap this button to see your current location on the map. You can then tap **Phone for help** and select the type of service you want to contact and tell them your exact location.



**First Aid Guide**

Tap this button to read the British Red Cross First Aid guide.



**Other guides**

---

Tap this button to read a selection of useful guides.

## 16. Hands-free calling

---

### Hands-free calling

If you have a mobile phone with Bluetooth®, you can use your TomTom GO to make phone calls and send and receive messages.

---

***Note:** Not all phones are supported or compatible with all features. For more information, go to [tomtom.com/phones/compatibility](http://tomtom.com/phones/compatibility).*

---

### Connecting to Your Phone

First you must establish a connection between your mobile phone and your TomTom GO.

Tap **Mobile phone** in the **Main Menu** and then follow the instructions on the screen.

You only need to do this once, after which your TomTom GO will remember your phone.

### Setting up TomTom Services

When you have established a connection with your phone, you can set up a wireless data connection for TomTom Services.

---

#### Tips

- Make sure that you switch on Bluetooth® on your phone.
- Make sure that your phone is set to "discoverable" or "visible to all".
- You may have to enter the password '0000' on your phone in order to connect to your TomTom GO.
- Make your TomTom GO a trusted device on your phone. Otherwise you will have to enter '0000' every time.

See your phone's user guide for information about Bluetooth® settings.

---

### Your Phone Book

You can copy your phonebook from your mobile phone to your TomTom GO so that you can make calls with just a few taps on the screen.

This is the safest way to make hands-free calls.

---

**Note:** You can copy your phonebook to your TomTom GO at any time. From the Mobile phone menu, tap **Get numbers from phone**.

Not all phones can transfer their phonebook to your GO. For more information, visit [www.tomtom.com/phones/compatibility](http://www.tomtom.com/phones/compatibility).

---

## Making a Call

Once you have established a connection with your phone, you can start making calls.

1. Tap **Mobile phone** in the Main Menu.
2. Tap **Call**.

---

**Note:** Make sure that your phone is currently selected. The current phone is shown at the bottom of the screen.

---

3. Tap **Number** to enter a number to call.
4. Do one of the following:
  - Tap **Home** to call your Home location. If you have not entered a number for your Home location this button is unavailable. To enter a number, tap **Change Home number** in the **Phone preferences** menu.
  - Tap **Number** to enter a number to call.
  - Tap **Point of Interest** to choose a Point of Interest (POI) to call. If your GO knows the phone number of a POI, this is shown next to the POI.
  - Tap **Phonebook entry** to select a contact from your phonebook.

---

**Note:** If you have not copied your phonebook to your TomTom GO, the button **Phonebook entry** is unavailable.

---

- Tap **Recently dialed** to select from a list of people or numbers you have called recently using your GO.
- Tap **Recent caller** to select from a list of people or numbers who called you recently. Only calls you have received on your GO are saved in this list.

## Receiving a call

When someone calls you, the caller's name and phone number are shown. Tap the screen to accept or reject the call.



Call...

---

**Tip:** This button also appears in the Driving view while a call is active. Tap this button in the Driving view while making a call, to view the Call... menu.

---

## Auto-Answer

You can tell your TomTom GO to answer every call automatically after a certain time. Tap **Phone preferences** in the mobile phone menu, then tap **Auto-answer preferences**.

Select when your TomTom GO will automatically answer your calls.

## Sharing your TomTom GO

To add more phones, do the following. You can establish connections for up to 5 mobile phones.

1. Tap **Mobile phone** in the Main Menu.
2. Tap **Connect to your phone**.
3. Tap **Find other phone...** and follow the instructions on the screen.

To switch between phones, tap **Connect to your phone** and then select your phone from the list.

## Call menu

When you open the Call menu, the following buttons are available:



Call...

Tap this button to make a call from your mobile phone.

This button also appears in the Driving view while a call is active. Tap this button in the Driving view to open the Call menu where you can see the details of the caller or end the call.

**Tip:** Tap this button in the Driving view while making a call, to view the Call menu.

---



REDIAL

Tap this button to redial a telephone number using your mobile phone.



Read/Write message

Tap this button to read or write a message.



Phone preferences

Tap this button to configure how your TomTom GO communicates with your mobile phone.



Get numbers from phone

Tap this button to load the contacts and phone numbers from your mobile phone onto your TomTom GO.

---



**Manage  
phones**

Tap this button to manage the mobile phones that will be connected to your TomTom GO. You can add a profile for up to five different mobile phones.

---



## 17. Favorites

---

### What are Favorites?

Favorites are places that you often visit. You can create Favorites so that you don't have to enter the address every time you want to navigate there.

They don't have to be places you especially like, just useful addresses.

### How can I create a Favorite?

From the Main Menu, tap **Add Favorite**.

You can then select the location of the Favorite from the list below.

Give your Favorite a name that is easy to remember. Your GO will always suggest a name, usually the address of the Favorite. To enter the name, just start typing. You don't have to delete the suggested name.



Local search

Tap this button to use TomTom Local search with Google search to help you find shops and businesses and save the location as a Favorite.

You can choose to search for shops and businesses near you, near your destination, near any other destination or in a city.

For example, if you are looking for a swimming pool near your current location, enter 'swimming pool' and choose the best search result.



Home

You can set your Home location as a Favorite.



Favorite

You cannot create a Favorite from another Favorite. This option will always be unavailable in this menu.

To rename a Favorite, tap **Manage Favorites** in the Preferences menu.



Address

You can specify an address to be a Favorite. When you enter an address, you can choose from four options.

- **City center**
  - **Street and house number**
  - **Zip code**
  - **Crossing or intersection**
-



**Recent destination**

Select a Favorite location from a list of places you have recently used as destinations.



**Point of Interest**

You can add a Point of Interest (POI) as a Favorite.

**Does it make sense to do this?**

If you visit a POI you particularly like, for example a restaurant, you can add it as a Favorite.

To add a POI as a Favorite, tap this button, then do the following:

1. Narrow your choice of POIs by selecting the area where the POI is.

You can select one of these options:

- **POI near you** - to search from a list of POIs near your current position.
- **POI in city** - to choose a POI in a particular town or city. You have to specify a town or city.
- **POI near Home** - to search from a list of POIs near your Home location.

If you are currently navigating to a destination, you can also select from a list of POIs which are on your route or near your destination. Choose one of these options:

- **POI along route**
- **POI near destination**

2. Select the category of POI.

Tap the category of POI if it is shown or tap the arrow to choose from the complete list.

Tap **Any POI category** to search for a POI by name.



**My location**

Tap this button to add your current position as a Favorite.

For example, if you stop somewhere interesting, while you are there you can tap this button to create the Favorite.



**Point on map**

Tap this button to create a Favorite using the map browser.

Select the location of the Favorite using the cursor, then tap **Done**.



**Latitude Longitude**

Tap this button to create a Favorite by entering latitude and longitude values.



**TomTom Buddy**

Tap this button to create a Favorite of the current position of a TomTom Buddy.

---



Position of  
last stop

Tap this button to select your last recorded position as your destination.

---

### How can I use a Favorite?

You will normally use a Favorite as a way of navigating to a place without having to enter the address. To navigate to a Favorite, do the following:

1. Tap the screen to bring up the main menu.
2. Tap **Navigate to...**
3. Tap **Favorite**.
4. Select a Favorite from the list.

Your GO calculates the route for you.

5. When the route is calculated, tap **Done**.

Your GO will immediately start guiding you to your destination with spoken instructions and visual instructions on the screen.

### How can I change the name of a Favorite?

1. Tap the screen to bring up the main menu.
2. Tap **Change preferences** to open the Preferences menu.
3. Tap **Manage Favorites**.
4. Tap the Favorite you want to rename.
5. Tap **Rename**.

### How can I delete a Favorite?

1. Tap the screen to bring up the main menu.
2. Tap **Change preferences** to open the Preferences menu.
3. Tap **Manage Favorites**.
4. Tap the Favorite you want to delete.
5. Tap **Delete**.

## 18. Music and Media

---

### Using your iPod® with your TomTom GO

A Windshield Mount that enables you to connect your iPod to your GO is available as an accessory.

Sound from your iPod is played through the internal speaker in your GO, or an external speaker if selected.

### Now Playing

As soon as you choose a song, your TomTom GO starts playing that song, followed by the rest of the songs in the list.



A Information about the song.

B Volume - change the volume by moving the slider.

C The **Options** button. You can, for example, choose to repeat a song and shuffle the songs. You can change these options:

- **Shuffle songs** - the next song is selected randomly.
- **Repeat song** - repeat the current song.
- **Reduce brightness** - brightness is only reduced on the playing screen.
- **Show music button in Driving View** - enables fast access to your music.
- **Automatically switch to Driving view** - when a song begins playing, the Driving View is shown.
- **Slideshow** - your photos are shown while your music is playing.

D Go to the previous or next song.

E Play or Pause the selected song.

F Tap the **Back** button to go back to the TomTom Jukebox player. The music continues to play. Tap **Playing...** in the Jukebox to open the Jukebox and control the music.

### Looking at Photos

1. Tap **Music and media** in the Main Menu.
2. Tap **Photo gallery**.

The Photo gallery starts, showing small versions (thumbnails) of all the photos on your GO.

Tap the arrows to move up and down the page of thumbnails.

Tap **Slideshow** to start a slideshow.

Tap the thumbnail of a photo to view a large version of that photo.



A Buttons to zoom in and zoom out on the photo.

B Buttons to move to the next and the previous photo.

C Tap **Slideshow** to start a slideshow.

D Tap **Delete** to delete a photo.

## 19. LIVE Services

---

### Regional availability

---

**Note:** LIVE services are only available in the US. For more information on available services in your country, go to [tomtom.com](http://tomtom.com).

---

### Safety Notice

Your TomTom GO contains a GSM/GPRS module which can interfere with electrical devices such as cardiac pacemakers, hearing aids and aviation equipment.

Interference with these devices may endanger the health or life of others.

Do not use near unprotected electrical units nor in areas where the use of mobile telephones is prohibited, such as hospitals and airplanes.

### LIVE Services subscriptions

#### Checking your LIVE Services subscription

You can check the status of your subscriptions at any time, by doing the following on your GO.

In the Main Menu, tap **TomTom Services** and then tap **My Services**.

Your GO will warn you when your LIVE Services subscription is approaching the renewal date.

For more information about LIVE Services subscription and payment terms, go to [tomtom.com/services](http://tomtom.com/services).

#### Renewing your LIVE Services subscription using your GO

1. In the Main Menu, tap **TomTom Services** and then tap **My Services**.

The current status of your LIVE Services is shown.

2. Tap on the service you want to renew.

Your GO confirms that you want to renew your subscription.

3. Tap **Yes**.

The renewal request is sent to TomTom. You should complete payment online, on or before the date shown on your GO.

#### Renewing your LIVE Services subscription using TomTom HOME

1. Connect your GO to your computer.

TomTom HOME starts and connects to your GO.

2. Open the LIVE Services section.
3. Check the status of your subscription and click on the service you want to renew.

You are asked to provide your payment details.

4. Enter your payment details and complete the transaction.

Your subscription is renewed.

## TomTom Traffic



Traffic is a unique TomTom LIVE Service for receiving up-to-date traffic information. For more information about services and subscriptions, go to [tomtom.com/services](http://tomtom.com/services).

In combination with IQ Routes, Traffic helps you plan the best possible route to your destination taking into account the latest traffic information.

A route is calculated taking into account the current local traffic conditions. Your TomTom GO automatically receives regular traffic information updates. If traffic incidents are found on your route, you are asked if you want to replan the current route to try and avoid the traffic incidents.

## Fuel Prices



The Fuel Prices service sends up-to-date information about fuel prices directly to your TomTom GO or via TomTom HOME when your GO is connected to your computer.

### Search for the best fuel prices

To search for the cheapest fuel prices, do the following. In this example, you will plan a route to the cheapest gas station nearby.

1. Tap the screen to bring up the Main Menu, then tap **TomTom Services**.
2. Tap **Fuel Prices**.
3. Select the type of fuel used in your vehicle.
4. Tap **Cheapest nearby**, then tap the name at the top of the list.

The location is shown on the map.

5. Tap **Select**.

You are asked if you want to navigate to the gas station.

6. Tap **Yes**.

You may be asked if you need to arrive at a particular time, if this option is enabled.

The route is planned and a summary of the route is shown on the map.



Using local search, you can search the Google listings to find stores and businesses near you, or any another location, and navigate there.

### Using local search

To find a destination using local search and plan a route to that location, follow the steps below. In this example, you will search for a supermarket near your current location.

1. Tap the screen to bring up the Main Menu, then tap **Navigate to**.
2. Tap the **Google** button.
3. Tap **Search near you**.
4. Type 'supermarket' then tap **OK**.

The locations that match your search are shown in a list.

5. Tap one of the locations in the list.

The location is shown on the map.

Tap **Details** to see more information about this location.

6. Tap **Select** to plan a route to the location.

Your TomTom GO plans a route to the location you selected.

### Other services



The following services are also available on your TomTom GO:

#### TomTom Weather



TomTom Weather gives you five day weather reports for any location on your map.

#### QuickGPSfix™



QuickGPSfix contains information about GPS satellite positions which helps your TomTom GO find your position faster.

#### TomTom Buddies



With Buddies, you can see where your friends are and let them see your location. You can also send locations to your friends.

#### My Services



To check your subscription, tap **TomTom Services** in the Main Menu and then tap **My Services**.



**Note:** When LIVE Services are unavailable, this image is shown in the Driving View.

Your TomTom GO informs you when your LIVE Services subscription is due for renewal. You can use your GO to inform TomTom that you wish to renew your current subscription.



For more information about LIVE Services subscription and payment terms, go to [tomtom.com/services](https://www.tomtom.com/services).

## 20. TomTom Traffic

---



Traffic is a unique TomTom LIVE Service for receiving up-to-date traffic information. For more information about services and subscriptions, go to [tomtom.com/services](http://tomtom.com/services).

In combination with IQ Routes, Traffic helps you plan the best possible route to your destination taking into account the latest traffic information.

A route is calculated taking into account the current local traffic conditions. Your TomTom GO automatically receives regular traffic information updates. If traffic incidents are found on your route, you are asked if you want to replan the current route to try and avoid the traffic incidents.

### Safety Notice

Your TomTom GO contains a GSM/GPRS module which can interfere with electrical devices such as cardiac pacemakers, hearing aids and aviation equipment.

Interference with these devices may endanger the health or life of others.

Do not use near unprotected electrical units nor in areas where the use of mobile telephones is prohibited, such as hospitals and airplanes.

### Using TomTom Traffic

The Traffic bar is shown on the right side of the Driving View. It warns you about traffic incidents on your planned route.



The top of the Traffic bar represents your destination and shows the total delay time for any incidents on your route.

The central section of the Traffic bar shows individual traffic incidents in the order they occur on your route.

The bottom of the Traffic bar represents your current position and shows the distance to the next incident.

To find the quickest route to your destination taking into account the latest traffic information, do the following:

1. Tap the sidebar.

---

**Tip:** If you have trouble tapping the sidebar and the Main Menu is being displayed instead of the traffic menu, try tapping your finger half on the sidebar and half off the screen.

---

2. Tap **Minimize traffic delays**.

Your device looks for the quickest route to your destination.

It is possible that the new route may also include traffic delays, or may even be the same route as before. You can re-plan the route to avoid all delays, but this new route will take longer than the quickest route already shown.

3. Tap **Done**.

---

**Tip:** You can let your TomTom device automatically minimize traffic delays for you.

---

## Minimize delays

You can set Traffic to minimize traffic delays on your route each time the latest traffic information updates are received.

1. Tap **TomTom Traffic** in the Main Menu.
2. Tap **Change Traffic preferences**.
3. Select **Automatically minimize delays after every traffic update**.
4. Tap **Done**.

## Changing HD Traffic preferences

Use the **Change Traffic preferences** button to choose how HD Traffic works on your device.



1. Tap **TomTom Traffic** in the Main Menu.
2. Tap **Change Traffic preferences**.
3. To hear a beep sound when a new traffic incident occurs on your route, select **Beep when traffic situation on route changes** and then tap **Done**.
4. If a faster route is found while you are driving, Traffic can replan your journey to use the faster route. Select one of the following options and then tap **Done**.

**Always switch to that route**

**Ask me if I want to change**

**Never change my route**

5. Tap **Done**.

## The Traffic sidebar

The Traffic sidebar shows you traffic incidents on your route, displaying the following information:

- A symbol for each traffic incident in the order they occur along your planned route.
- The estimated delay of the next traffic incident on your route.
- The estimated delay for all incidents on your route.
- The distance from your current location to the next incident on the Traffic sidebar.

---

**Note:** The color of the sidebar changes depending on how old the traffic information is on your device.

---

An example of an Traffic sidebar is shown below.



In the example, the sidebar shows you that there are two incidents ahead.

To re-plan your route to avoid these incidents, tap the sidebar to open the TomTom **traffic** menu, then tap **Minimize traffic delays**.

---

**Note:** To make the Traffic sidebar more readable some incidents may not be shown. These incidents will always be of minor importance and only cause short delays.

---

## Making commuting to work easier

The **Home to work** and **Work to home** buttons in the Traffic menu let you check your route to and from work with one tap of a button. When you use either of these buttons, your device checks the route for possible delays and if it finds any, provides you with the possibility to avoid them.

The first time you use **Home to work**, you must set your traffic home and work locations, do the following:



1. Tap TomTom **Traffic** in the Main Menu.
2. Tap **Show home-work traffic**.
3. Tap **Change home-work**
4. Set your home location
5. Set your work location.

You can now use the **Home to work** and **Work to home** buttons of the Show home-work traffic menu.

---

**Note:** The home location you set here is not the same as the home location you can set in the **Preferences Menu**. In addition, the locations you use here do not have to be your actual home and work locations. If there is another route that you often travel, you can set Work/Home to use these locations instead.

---



For example, to check for delays on your route home, do the following:

1. Tap TomTom **Traffic** in the Main Menu.
2. Tap **Show home-work traffic**.

### 3. Tap **Work to home**.

The driving view is shown. If the Traffic sidebar shows any delays on your route, tap the Traffic sidebar and then **Minimize traffic delays** to see your fastest route to home.

## Checking traffic incidents in your area

Get an overview of the traffic situation in your area, using the map. To find local incidents and their details, do the following:



### Browse map

1. Tap TomTom **Traffic** in the Main Menu.
2. Tap **Browse map**.

The map browser screen is shown.

3. Tap the blue compass image in the top right of the screen.

The map centers itself on your current location and any traffic incidents in the area are shown.






4. Tap on any traffic incident to get more information.

A screen is shown that gives you detailed information about the incident you chose. To display information about surrounding incidents use the left and right arrows at the bottom of this screen.

## Traffic sidebar colors

The Traffic sidebar changes colors depending on how old the traffic information is on your device. The sidebar colors are:

-  **Dark blue** - The traffic information on your device is up to date.
-  **Lilac** - The traffic information on your device has not been updated for at least 10 minutes. Traffic still warns you about traffic incidents, but the information is at least ten minutes old.
-  **Grey** - The traffic information on your device has not been updated for at least 15 minutes. Traffic will only warn you about traffic incidents once it has been able to update this information.

---

**Note:** The traffic information on your device is updated automatically and the Traffic sidebar will normally remain dark blue. However, it is possible that the device might not update traffic information. This may happen if, for example, there is no or poor network coverage in your area, or if you are driving in a country other than the one for which you purchased TomTom Traffic.

---

## Traffic incidents

Traffic incidents are displayed as small symbols on the Driving View and the Traffic sidebar. There are two type of symbols:

- Symbols shown in a red square are incidents that Traffic can help you to avoid.
- Symbols shown in a red triangle are weather related and are for information only. You cannot use Traffic to avoid them.

Traffic incident symbols:



Accident



Road works



One or more lanes closed



Road closed



Traffic incident



Traffic jam

Weather related symbols:



Fog



Rain



Wind



Ice



Snow

---



---

**Note:** The incident avoided symbol is shown for any traffic incident that you avoid using TomTom Traffic.

---

## Traffic menu

To open the Traffic menu, tap the Traffic sidebar in the Driving View or tap TomTom **Traffic** in the Main Menu. The following buttons are available:



**Minimize traffic delays**

Tap this button to re-plan your route based on the latest traffic information.



**Show traffic on route**

Tap this button to get an overview of any traffic incidents along your route. Use the left and right buttons of the overview screen to see more detailed information about each incident. You can also use the **Replan** button of the overview screen to replan your route avoiding the traffic incidents.



**Show home-work traffic**

Tap this button to calculate and show the quickest route from your home location to your place of work and back.



**Browse map**

Tap this button to browse the map and see the traffic information displayed on the map.



**Change Traffic preferences**

Tap this button to change your preferences for how TomTom Traffic works on your device.

---

## 21. Introducing TomTom HOME

---

TomTom HOME is a free application for your computer that helps you manage the contents of your TomTom GO navigation device. It is a good idea to frequently connect to HOME to ensure you always have the latest updates on your device.

You can, for example, do the following:

- Manage maps, voices, POIs and more.
- Buy TomTom services and manage your subscriptions.
- Update your device automatically with the latest software and services.
- Make and restore backups.
- Read the full version of the user manual.

---

**Tip:** We recommend using a broadband internet connection whenever you connect to HOME.

It is a good idea to make regular backups of your navigation device using HOME.

---

### Installing TomTom HOME

To install TomTom HOME on your computer, do the following:

1. Connect your computer to the internet.
2. Connect the Home dock to your computer.

---

**Note:** You should plug the USB connector directly into a USB port on your computer and not into a USB hub or USB port on a keyboard or monitor.

---

3. Place your TomTom navigation device in the Home dock and switch it on.

TomTom HOME starts to install.

---

**Note:** If TomTom HOME does not install automatically, you can download the application from [www.tomtom.com/home](http://www.tomtom.com/home).

---

TomTom HOME starts automatically when the navigation device is switched on while the device is connected to your computer.

### MyTomTom Account

To download content and services using TomTom HOME, you need a MyTomTom account. You can create an account when you start using TomTom HOME.



## 22. Addendum

---

### Important Safety Notices and Warnings

#### Global Positioning System

The Global Positioning System (GPS) is a satellite-based system that provides location and timing information around the globe. GPS is operated and controlled under the sole responsibility of the Government of the United States of America, which is responsible for its availability and accuracy. Any changes in GPS availability and accuracy, or in environmental conditions, may impact the operation of your TomTom device. TomTom does not accept any liability for the availability and accuracy of GPS.

#### Use with Care

Use of a TomTom device for navigation still means that you need to drive with due care and attention.

#### Aircraft and Hospitals

Use of devices with an antenna is prohibited on most aircraft, in many hospitals and in many other locations. A TomTom device must not be used in these environments.

### Taking care of your TomTom device

Do not leave your TomTom device or TomTom accessories on view when you leave your car. They may become an easy target for thieves.

You can set a password for your device which must be entered every time you start your device.

We recommend that you use the safety preferences on your TomTom device, where available. The safety preferences are available in the Preferences menu.

Take care of your TomTom device and clean it correctly.

- Use a soft cloth to wipe the screen of your device; do not use any liquid cleaners.
- If your device gets wet, dry it with a soft cloth.
- Do not open the casing of your device under any circumstances. Doing so may be dangerous and will invalidate your warranty.
- Do not use the memory card (SD card) with any device other than a TomTom device. Other devices may damage the memory card.
- Do not expose your device to high or low temperatures, which can cause permanent damage. For example, don't leave it in the car on hot summer days or during cold winter nights.

## Battery

This product uses a Lithium-Polymer battery. Do not use it in a humid, wet and/or corrosive environment. Do not put, store or leave your product in or near a heat source, in a high temperature location, in strong direct sunlight, in a microwave oven or in a pressurized container, and do not expose it to temperatures over 60 C (140 F). Failure to follow these guidelines may cause the Lithium-Polymer battery to leak acid, become hot, explode or ignite and cause injury and/or damage. Do not pierce, open or disassemble the battery. If the battery leaks and you come into contact with the leaked fluids, rinse thoroughly with water and seek medical attention immediately. For safety reasons, and to prolong the lifetime of the battery, charging will not occur at low (below 0 C/32 F) or high (over 45 C/113 F) temperatures.

Temperatures: Standard operation: -10 C (14 F) to +55 C (131 F); short period storage: -20 C (-4 F) to + 60 C (140 F); long period storage: -20 C (-4 F) to +25 C (77 F).



THE LITHIUM-POLYMER BATTERY CONTAINED IN THE PRODUCT MUST BE RECYCLED OR DISPOSED OF PROPERLY. USE YOUR TOMTOM ONLY WITH THE SUPPLIED DC POWER LEAD (CAR CHARGER/BATTERY CABLE) AND AC ADAPTER (HOME CHARGER) FOR BATTERY CHARGING.

To recycle your TomTom unit please see your local approved TomTom service center.

The stated battery life is a maximum possible battery life. The maximum battery life will only be achieved under specific atmospheric conditions. The estimated maximum battery life is based on an average usage profile.

For tips on extending the battery life, go to the FAQ listed below for your country:

AU: [www.tomtom.com/8703](http://www.tomtom.com/8703)  
CZ: [www.tomtom.com/7509](http://www.tomtom.com/7509)  
DE: [www.tomtom.com/7508](http://www.tomtom.com/7508)  
DK: [www.tomtom.com/9298](http://www.tomtom.com/9298)  
ES: [www.tomtom.com/7507](http://www.tomtom.com/7507)  
FI: [www.tomtom.com/9299](http://www.tomtom.com/9299)  
FR: [www.tomtom.com/7506](http://www.tomtom.com/7506)  
HU: [www.tomtom.com/10251](http://www.tomtom.com/10251)  
IT: [www.tomtom.com/7505](http://www.tomtom.com/7505)  
NL: [www.tomtom.com/7504](http://www.tomtom.com/7504)  
PL: [www.tomtom.com/7503](http://www.tomtom.com/7503)  
PT: [www.tomtom.com/8029](http://www.tomtom.com/8029)  
RU: [www.tomtom.com/10250](http://www.tomtom.com/10250)  
SE: [www.tomtom.com/8704](http://www.tomtom.com/8704)  
UK: [www.tomtom.com/7502](http://www.tomtom.com/7502)  
US: [www.tomtom.com/7510](http://www.tomtom.com/7510)

## SPECIAL NOTE REGARDING DRIVING IN CALIFORNIA AND MINNESOTA

California Vehicle Code Section 26708 (a) (1) provides that "No persons shall drive any motor vehicle with an object or material placed, displayed, installed, affixed or applied upon the windshield or side or rear windows." Drivers in California should not use a suction mount on their windshield, side or rear windows.

Note: this section of the California Vehicle Code applies to anyone driving in California, not just California residents.

Minnesota State Legislature Statutes Section 169.71, subdivision 1, section 2 provides that "A person shall not drive or operate with any objects suspended

between the driver and the windshield other than sun visors and rearview mirrors and electronic toll collection devices.”

Note: this Minnesota Stature applies to anyone driving in Minnesota, not just Minnesota residents.

TomTom Inc. bears no responsibility for any fines, penalties or damage that may be incurred by disregarding this notice. While driving in any state with windshield mounting restrictions, TomTom recommends the use of the supplied Adhesive Mounting Disk or its Alternative Mounting Kit, which includes multiple options for mounting TomTom devices on the dashboard and using the air vents. See [www.tomtom.com](http://www.tomtom.com) for more information about this mounting option.

## FCC Information for the User



This product contains a transmitter which must not be co-located or simultaneously operated in conjunction with any other transmitter.

### Exposure to Radio Frequency Radiation

This device complies with FCC radiation exposure limits set forth for an uncontrolled environment. In order to avoid the possibility of exceeding the FCC radio frequency exposure limits, human proximity to the antenna shall not be less than 8 inches (20 cm) during normal operation.

### Radio and Television Interference

This equipment radiates radio frequency energy and if not used properly - that is, in strict accordance with the instructions in this manual - may cause interference to radio communications and television reception.

This device has been tested and found to comply with the limits for a Class B digital device, pursuant to Part 15 of the FCC Rules. These limits are designed to provide reasonable protection against harmful interference in a residential installation. This equipment generates, uses and can radiate radio frequency energy and, if not installed and used in accordance with the instructions, may cause harmful interference to radio communications. However, there is no guarantee that interference will not occur in a particular installation. If this equipment does cause harmful interference to radio or television reception, which can be determined by turning the equipment off and on, the user is encouraged to try to correct the interference by one or more of the following measures:

- Reorient or relocate the receiving antenna.
- Increase the separation distance between the equipment and the receiver.
- Connect the equipment into an outlet on a circuit different from that to which the receiver is connected.
- Consult an experienced radio/TV technician for help.

Changes or modifications not expressly approved by the party responsible for compliance could void the user's authority to operate the equipment.

### Important

This equipment was tested for FCC compliance under conditions that included the use of shielded cables and connectors between it and the peripherals. It is important that you use shielded cables and connectors to reduce the possibility of causing radio and television interference. Shielded cables suitable for the product range can be obtained from an authorised dealer. If the user modifies the equipment or its peripherals in any way, and these modifications are not approved by TomTom, the FCC may withdraw the user's right to operate the equipment. For customers in the USA, the following booklet prepared by the Federal Communications Commission may be of help: "How to Identify and Resolve Radio-TV Interference Problems". This

booklet is available from the US Government Printing Office, Washington, DC 20402. Stock No 004-000-00345-4.

## FCC Declaration of Conformity

### Tested to comply with FCC Standards for Home or Office Use

FCC ID: S4L4CF7  
IC ID: 5767A-4CF7

This device complies with part 15 of the FCC Rules. Operation is subject to the following two conditions:

1. This device may not cause harmful interference.
2. This device must accept any interference received, including interference that may cause undesired operation.

### Responsible party in North America

TomTom, Inc., 150 Baker Avenue Extension, Concord, MA 01742

Tel: 866 486-6866 option 1 (1-866-4-TomTom)

### Emissions information for Canada

This Class B digital apparatus complies with Canadian ICES-003.

Operation is subject to the following two conditions: (1) this device may not cause harmful interference and (2) this device must accept any interference, including interference that may cause undesired operation of the device.

This category II radiocommunication device complies with Industry Canada Standard RSS-310.

## Connected networks

Devices that contain a GSM module are intended for connection to the following networks:

GSM/GPRS 850/1900

## This Document

Great care was taken in preparing this manual. Constant product development may mean that some information is not entirely up-to-date. The information in this document is subject to change without notice.

TomTom shall not be liable for technical or editorial errors or omissions contained herein; nor for incidental or consequential damages resulting from the performance or use of this material. This document contains information protected by copyright. No part of this document may be photocopied or reproduced in any form without prior written consent from TomTom International B.V.

## 23. Copyright notices

---

---

*© 2009 TomTom International BV, The Netherlands. TomTom™ and the "two hands" logo are among the trademarks, applications or registered trademarks owned by TomTom International B.V. Our limited warranty and end user license agreement for embedded software apply to this product; you can review both at [www.tomtom.com/legal](http://www.tomtom.com/legal)*

---

---

*© 2009 TomTom International BV, The Netherlands. TomTom™ et le logo TomTom ("deux mains") comptent parmi les marques commerciales, les applications ou les marques déposées de TomTom International B.V. L'utilisation de ce produit est régie par notre garantie limitée et le contrat de licence utilisateur final relatif aux logiciels embarqués ; vous pouvez consulter ces deux documents à l'adresse suivante : [www.tomtom.com/legal](http://www.tomtom.com/legal)*

---

---

*© 2009 TomTom International BV, Países Bajos. TomTom™ y el logotipo "dos manos" son marcas comerciales, aplicaciones o marcas registradas de TomTom International B.V. Nuestra garantía limitada y nuestro acuerdo de licencia de usuario final para el software integrado son de aplicación para este producto; puede consultar ambos en [www.tomtom.com/legal](http://www.tomtom.com/legal)*

---

---

### *Data Source*

*© 1984 – 2009 Tele Atlas North America. Inc. All rights reserved.*

*Canadian Data © DMTI Spatial. Portions of Canadian map data are reproduced under license from Her Majesty the Queen in Right of Canada with permission from Natural Resource Canada. Point of Interest data by Info USA. Copyright 2009.*

---

---

*SoundClear™ acoustic echo cancellation software © Acoustic Technologies Inc.*

---

---

*Apple® and iPod® are trademarks of Apple Computer, Inc., registered in the U.S. and other countries.*

---

---

*Audible®, AudibleListener® and Audiblemanager® are registered trademarks of Audible, Inc. When purchasing and using Audible content you need to agree to the terms and conditions as posted in the Legal Notices [www.audible.com](http://www.audible.com).*

---

---

*Text to Speech technology, © 2009 Loquendo TTS. All rights reserved.  
Loquendo is a registered trademark. [www.loquendo.com](http://www.loquendo.com)*

---

---

*MPEG Layer-3 audio coding technology licensed from Fraunhofer IIS and Thomson.*

*Supply of this product does not convey a license nor imply any right to distribute content created with this product in revenue-generating broadcast systems (terrestrial, satellite, cable and/or other distribution channels), streaming applications (via Internet, intranets and/or other networks), other content distribution systems (pay-audio or audio-on-demand applications and the like) or on physical media (compact discs, digital versatile discs, semiconductor chips, hard drives, memory cards and the like). An independent license for such use is required. For details, please visit [mp3licensing.com](http://mp3licensing.com)*

---

---

*Some images are taken from NASA's Earth Observatory.*

*The purpose of NASA's Earth Observatory is to provide a freely-accessible publication on the Internet where the public can obtain new satellite imagery and scientific information about our home planet.*

*The focus is on Earth's climate and environmental change:  
[earthobservatory.nasa.gov/](http://earthobservatory.nasa.gov/)*

---